

Baragar Systems

PLANNING INTELLIGENCE FOR INTELLIGENT PLANNING



Projections



Boundary Planning



Staff Optimization



Policy Development & Identification of Best Practices



Community & School Profiling

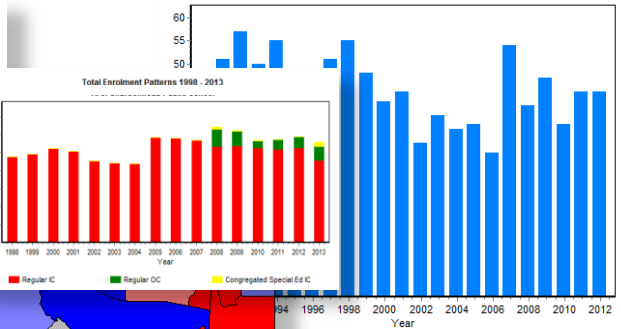


School Locator

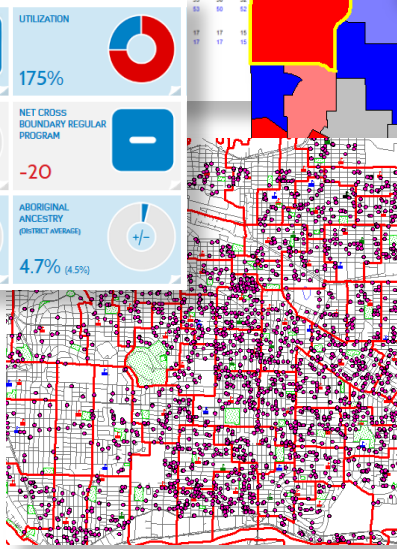
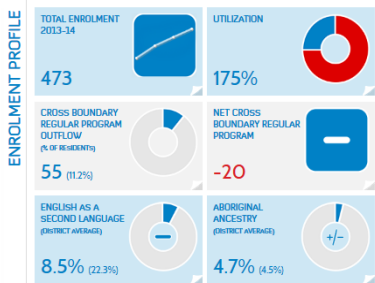
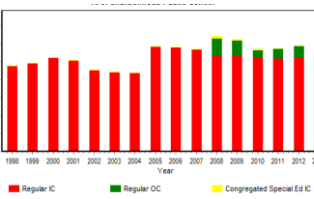
Capacities and Projected Enrolments by Program

Official Capacity	Actual												Projected Enrolment											
	2012	2013	2014	2015	2016	2017	2018	2019	2020	2021	2022	2023	2024	2025	2026	2027	2028							
Phonix Public School	266	267	262	262	261	317	324	338	349	349	355	363	368	369	373	376	37*							
Queen Elizabeth Public School	266	269	264	276	271	265	267	265	266	263	266	267	273	273	274	274	274							
Redwood Public School	262	266	269	264	268	311	314	317	313	322	324	324	324	324	324	324	324							
Water Zebra Public School	266	266	266	266	266	266	266	266	266	266	266	266	266	266	266	266	266							
Westloch Public School	266	266	266	266	266	266	266	266	266	266	266	266	266	266	266	266	266							

Births:



Total Enrolment Patterns 1998 - 2013



Annual History

Year	1	2	3	4	5	6	7	8	9	10	11	12	Total
2009	13	13	13	13	13	13	13	13	13	13	13	13	118
2010	13	13	13	13	13	13	13	13	13	13	13	13	118
2011	13	13	13	13	13	13	13	13	13	13	13	13	118
2012	13	13	13	13	13	13	13	13	13	13	13	13	118
2013	13	13	13	13	13	13	13	13	13	13	13	13	118

Enrollment	Birth Utilization	Population Increase Year (%)	% Adjustment	Participation Rate	Out of Catchment	Attending Reg. Program	Net Cross Boundary	Out of District	Capture Rate	Socio-Economic Indicator
548	112%	2.2%	63%	67	105	3	0	0	0	0
535	104%	1.1%	55%	83	148	4	0	0	0	0
398	81%	2.1%	66%	34	162	5	0	0	0	0
191	65%	0.9%	29%	216	-166	1	0	0	0	0
136						11				
309	97%	0.3%	38%	162	-74	0	0	0	0	0
306	74%	0%	55%	34	134	1	0	0	0	0
84						5				
415	94%	-2.0%	35%	112	-68	2	0	0	0	0

"Demographic Dynamics plays a key role in helping our District develop accurate projection enrollments. Using GeoSchool we were able to develop several different concepts based on real-time student data. Our Community Boundary Committee really appreciated how easy it was to "visualize" these changes as they worked to refine their models. The staff at Baragar are always available to share their insight and have proven to be an invaluable resource!"

JOHN PETZKE, Chief Technology Officer
North Shore School District 112, Highland Park, Illinois

604-535-3690
www.baragar.com
info@baragar.com



Custom Planning Software Solutions for School Districts Committed to Data-Driven Decision Making

- Software exclusively designed for School and District Planning.
- Serving School Districts for 35 years.
- Turnkey – data is purchased, gathered, cleaned and incorporated into custom software.
- Client feedback and ideas integrated into software development process.
- District data sources are integrated into software.
- Birth data included for each School.
- ‘What if’ scenarios – dynamic changes lead to conversations and collaboration amongst District departments.
- Credibility, objectivity and transparency for public presentations.
- Training is FREE and training tools on-line.
- 113 Clients; 2.1 million pupils.



STAFF ALLOCATOR – OPTIMIZE

Save FTE’s for budgeting or reassignment to schools in need. Optimize the organization of each elementary and middle school in the most cost-effective manner based on **contractual** and **educational parameters** concerning class size and/or composition.



GEO SCHOOL – EFFICIENCIES

A geographic information system designed to aid in **capital resource management** and educational problem solving.



DEMOGRAPHIC DYNAMICS – ACCURACY

Interactive enrollment projection software that facilitates the analysis of future **staffing** and **capital** requirements for the next 15 years. Multiple projections can be instantaneously created based on different assumptions.



THEME MAP – BEST PRACTICES

A thematic display of information based on the school boundaries of the District – Import and display your own data (Student Achievement, Facilities, HR etc.) to aid in the development of best practices – an ideal vehicle for policy development.



SCHOOL LOCATOR – ONLINE

Answers public queries from from your District website as to where their children should attend school based on their home address.



DISTRICT INTELLIGENCE – MORE THAN A DASHBOARD

A web-based tool – designed to increase the access of your District’s data in a format that is easy to interpret.